

# Recommendations on the optimal ways of complementing public transport with shared mobility solutions

Commission expert group on Urban Mobility





# Introduction, mandate and objectives of EGUM

## A reformed Commission Expert Group on Urban Mobility

- Reinforced platform for dialogue and the co-creation of new actions to implement the new EU urban mobility framework
- Stronger engagement of Member States and improved dialogue between cities, regions and stakeholders on all urban mobility issues
- Working particularly on Public transport and shared mobility, active modes
- Advising and providing technical expertise to EC on priorities in the field of sustainable urban mobility, through recommendations, opinions and reports
- Advising the EC on how to develop synergies between EU, national and regional funding and financing opportunities including the Social climate Fund



# Public Transport and shared mobility sub-group objectives

## Delivered recommendations on:

The Context of Public Transport in Europe

The prioritization of public transport in rural/peri-urban and urban/ areas to enable the operation of multimodal, and reliable services that will increase the use of public transport

The optimal ways of complementing public transport with shared mobility solutions both in urban and rural/peri-urban areas

How to guarantee Public Transport and shared mobility accessibility and inclusiveness

Addressing the worker shortage: training, improving working conditions, and diversifying the workforce.

How to fund and finance Public transport and shared mobility

+ Report on Social Climate Fund.

## Members

---

**Member States:** Luxembourg, Czechia, Italy, The Netherlands, Belgium, France, Portugal, Finland, Lithuania, Latvia, Poland

---

**Regional Government / City:** Barcelona, Oradea, Toulouse Métropole, Budapest, Braga, Ile-de-France, Central Slovenia Statistical region (w.Ljubjana)

---

**Associations / Organisations :** Cycling industries, ECF, AVERE, MaaS Alliance, T4SM, IRU, EPTO, CEMR, ERTICO, MOVE EU, POLIS, Eurocities, CER, Micro-Mobility for Europe, EPTO, ETF-Europe, LEVA-EU, CoR, ACEA, JRC, EIT urban mobility, EMTA



# Main recommendations

While mass public transport is the backbone of urban mobility, providing the most certainty and stability, it cannot respond to all transport needs.

A combination of public transport with shared mobility offers the opportunity to reduce car dependence and to reallocate urban space.

This report explores its key challenges in terms of :

1. Overall policy
2. Infrastructure
3. Integration



# Overall policy

## Ensuring complementarity of shared mobility and public transport:

Need for coordination between public and private actors

Regulation should ensure that new mobility services can operate alongside traditional public transport services rather than undermining them.

→ Levels of Action: EU, National, Regional & Local Authorities, Public Transport Authorities, Shared Mobility Providers

## Ensure reliable business models through clear strategic consideration

For shared mobility to be able to provide adequate complementation to the public transport system, the services need to be reliable, which requires a viable business model.

→ Levels of Action: Regional & Local Authorities, Public Transport Authorities, Shared Mobility Providers, Shared Mobility Supply Industry

# Infrastructure



Available space is limited: priority must be given to the most sustainable, safe, just, and efficient modes in their use of space.

**Reversing the hierarchy of transport modes to manage the competition for public space:**  
A more balanced sharing of public space between all urban uses supports the development of shared mobility.

→ Levels of Action: EU (Harmonization and Guidance), National, Regional & Local Authorities

**Adapting the current infrastructure and the rolling stock to best accommodate shared mobility services.**

→ Levels of Action: National, Regional & Local Authorities, Public Transport Authorities, Public Transport Operators, PT Supply Industry



# Integration

**Integrate public transport, shared and on-demand mobility solutions into urban development, office and housing projects:** providing space for shared (micro-)mobility hubs in new construction projects and by entering into bilateral partnerships with developers

→ Levels of Action: National, Regional & Local Authorities, Shared Mobility Providers, Shared Mobility Supply Industry

**Develop attractive multimodal hubs in rural as well as in urban areas.**

→ Levels of Action: National, Regional & Local Authorities, Public Transport Authorities, (Public Transport Operators, Shared Mobility Providers

**Technology as an enabler of shared and on demand mobility**

→ Levels of Action: Public Transport Authorities, Public Transport Operators, Shared Mobility Providers, Shared Mobility Supply Industry

**Ensure safety of shared mobility services and inclusive service development**

→ Levels of Action: EU, National, Regional & Local Authorities, Public Transport Authorities, Public Transport Operators, Shared Mobility Providers, Shared Mobility Supply Industry





Readily available examples



# Integration of shared mobility services into the public transport hubs



© WienMobilStation\_SimmeringerPlatz



Wienen Linien, Vienna public transport operator

# Development of new forms of Mobility by Île-de-France Mobilités



**Véligo Location:** Rollout in 2019 by Île-de-France Mobilités of an electrically assisted bike (EAB) hire service with a fleet of 20,000 bikes and 500 cargo bikes (the largest EAB fleet in the world) > Over 71,300 subscriptions in 2022§

**Bicycle purchase subsidy:** Grant of 500 euros for the purchase of an electric bike and up to 1,200 euros for a cargo bike funded by Île-de-France Mobilités > this already represents 190,000 people who have already been helped to acquire a bicycle!

**Carpooling:** A scheme running that provides free carpool rides for holders of a Navigo pass (annual, monthly or Imagine R) up to a maximum of 2 journeys of 30 km per day (with 3 partner carpooling companies)

**Carsharing:** Creation of a regional certification label in order to define a strategy in a concerted manner, throughout the Île-de-France area (11 labelled operators)



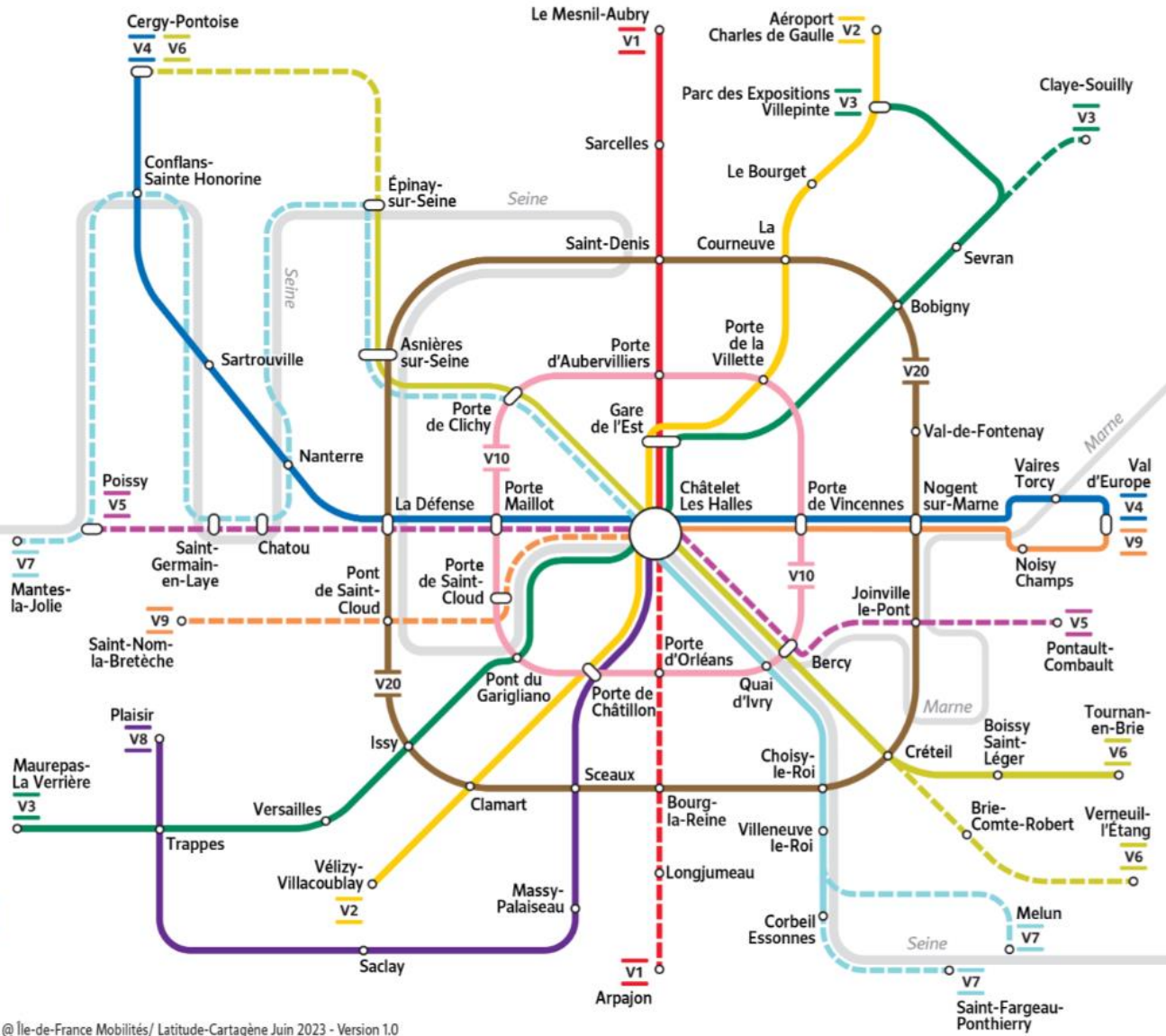


### Pistes cyclables aménagées

- V1** Le Mesnil-Aubry  
Arpajon
- V2** Aéroport Charles-de-Gaulle  
Vélizy-Villacoublay
- V3** Parc des Expositions Villepinte/  
Claye-Souilly  
Maurepas - La Verrière
- V4** Val d'Europe  
Cergy-Pontoise
- V5** Pontault-Combault  
Poissy
- V6** Tournan-en-Brie/Verneuil-l'Étang  
Cergy-Pontoise
- V7** Saint-Fargeau-Ponthierry/Melun  
Mantes-la-Jolie
- V8** Plaisir  
Paris
- V9** Val d'Europe  
Saint-Nom-la-Bretèche
- V10** Petite ceinture
- V20** Grande ceinture

### Légende

- Phase 1
- Phase 2



750 km of  
express bike  
networks in  
Île-de-France

# Demand-responsive transport



## Vienna, Lisbon, Tartu – LIFE MOONSET Project

During the 3-year project period, the three urban areas will design, implement, and evaluate an innovative demand responsive transport (DRT) shuttle service for nocturnal workers.

The project's aims to achieve a minimum 80% reduction in CO2 emissions per person-kilometer.

Participants are expected to save on commuting costs by using the shuttle-service.

## In Île-de-France

Developed a new simple and comprehensive app for users. 767 cities are served by this service, with 2 million trips since 2019.

## Discover other examples:



Krakow, with TeleBus

Prague integrated transport, with the Halopid service



**stpgflex**

Votre bus  
à la demande  
dans la région

Geneva, with TPG Flex and the mobility pricing pilot

# Integrated mobility in the Paris / Île-de-France Region

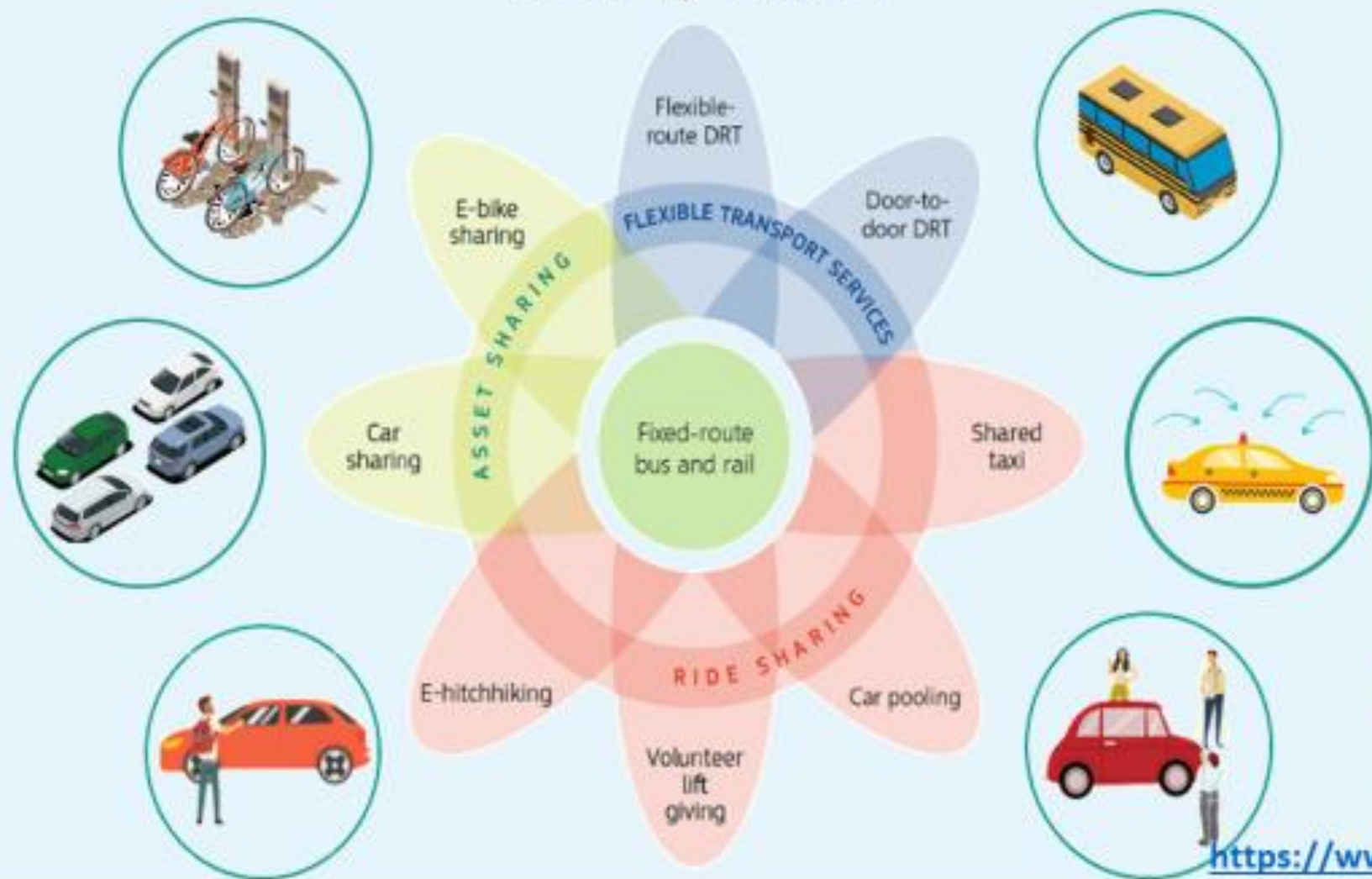


The Île-de-France Mobilités application allows:

- Search and calculate routes for all modes of transport in the Paris region (Metro, RER, trains, bus, station timetables, carpooling, transport on demand, Velib metropolitain service etc...)
- Recharging or purchasing on smartphone (mobile channel):
  - By going to the "Purchase" tab of the Île-de-France Mobilités app : The application will display the various tickets available for purchase.
  - To pay, you must have a bank card and enter an e-mail address to which the proof of purchase will be sent.

# SMARTA-net: rural mobility services

## Mobility services



# Efficient & Green MOBILITY



Françoise GUASPARE, coleader of the EGUM subgroup

Thank you for your attention!